

### Umbrella displays

**3 different shapes/sizes:**

**Square (229 x 229 cm)**  
with soft bag, Item 80650  
with hard case. Item 80651

**Portrait (180 x 269 cm)**  
with soft bag, Item 80653  
with hard case. Item 80654

**Landscape (269 x 180 cm)**  
with soft bag, Item 80656  
with hard case. Item 80657



### Accessories



**1** Take out ShowFlex from the bag/case and set it upright on a table.



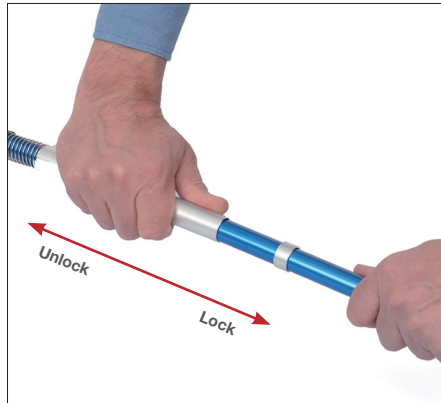
**2** Unfold unit by pushing hub toward table.



**3** Pivot telescoping leg 90° to lock hub and click in at the locking pin.



**4** Unfold arms and lock springloaded sliders.



**5** Lock and unlock the arms with the springloaded sliders.



**6** Extend the telescopic leg.

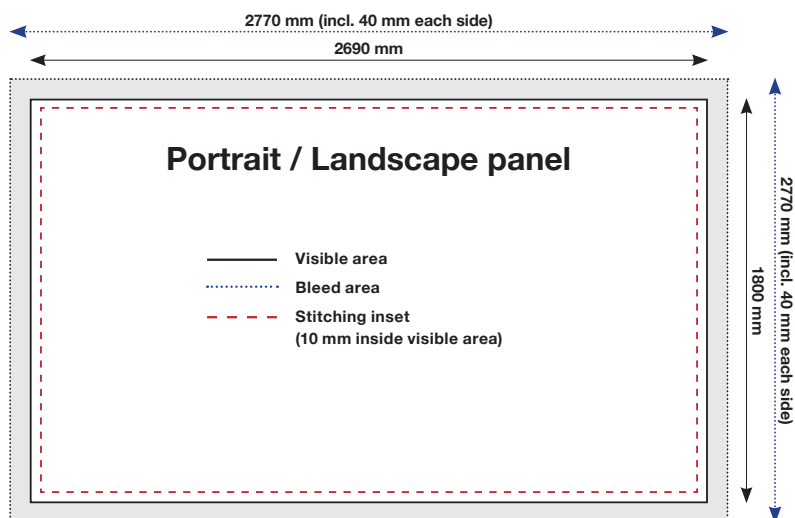
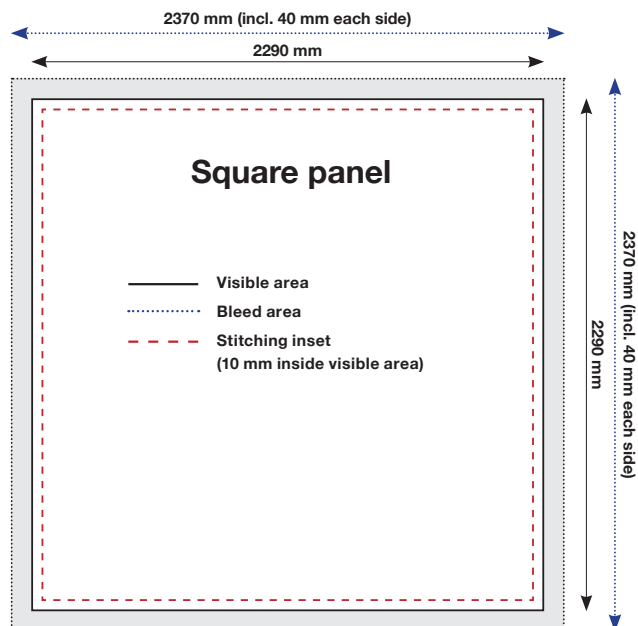


**7** Pull hub away toward from the graphic to stretch the system to complete setup.

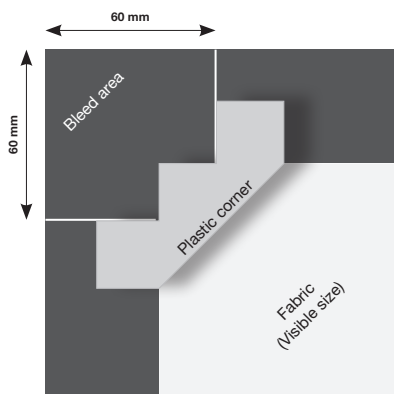


**8** Hang the transport case with the shoulder strap on the back hub to add counter-balance to the display.

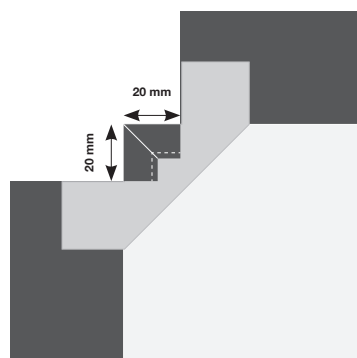
## Graphic panel production



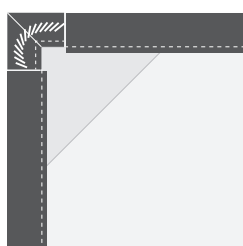
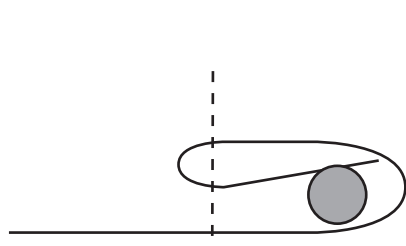
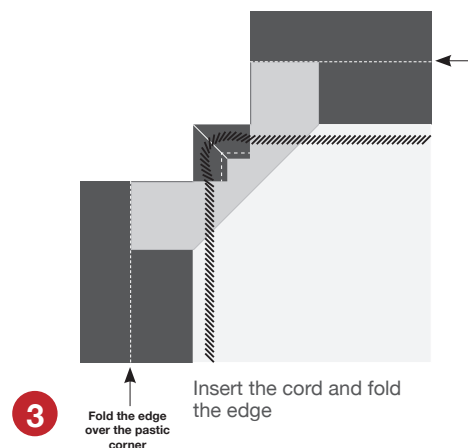
## Sewing instruction (Please observe the cord and plastic corners not included)



- 1** Attach the plastic corner and cut in the bleed



- 2** Fold and sew the corner



- 4** Fold the edge and the plastic corner wing over the cord and sew all sides