

Rounded corner module

Starter Module

Rounded corner kit (item IS-9617):

Complete Module

- 1** 2 rounded corner plates,
- 2** 4 Straight beam, 400
- 3** 4 beams, 453 mm
- 4** 2 beams, 405 mm with hole
- 5** 4 Twist lock clamps
- 6** 2 Extension post, 267 mm

Midi IS-9429-1

- IS-9615
- IS-400-BS
- IS-453-BS
- IS-405-BS
- IS-9339
- IS-0267-ETM

Maxi IS-9429-2

- IS-9615
- IS-400-BS
- IS-453-BS
- IS-405-BS
- IS-9339
- IS-0267-ETM

Vertical posts:

- 7** 2 Base post, 750 mm, adjustable foot
- 8** 2 Extension post, 750 mm
- 9** 2 Base post, 750 mm
- 10** 2 Extension post, 750 mm
- 11** 2 Top post, 755 mm
- 12** 2 Extension post, 200 mm
- 13** 2 Extension post, 200 mm

Midi (2270 mm)

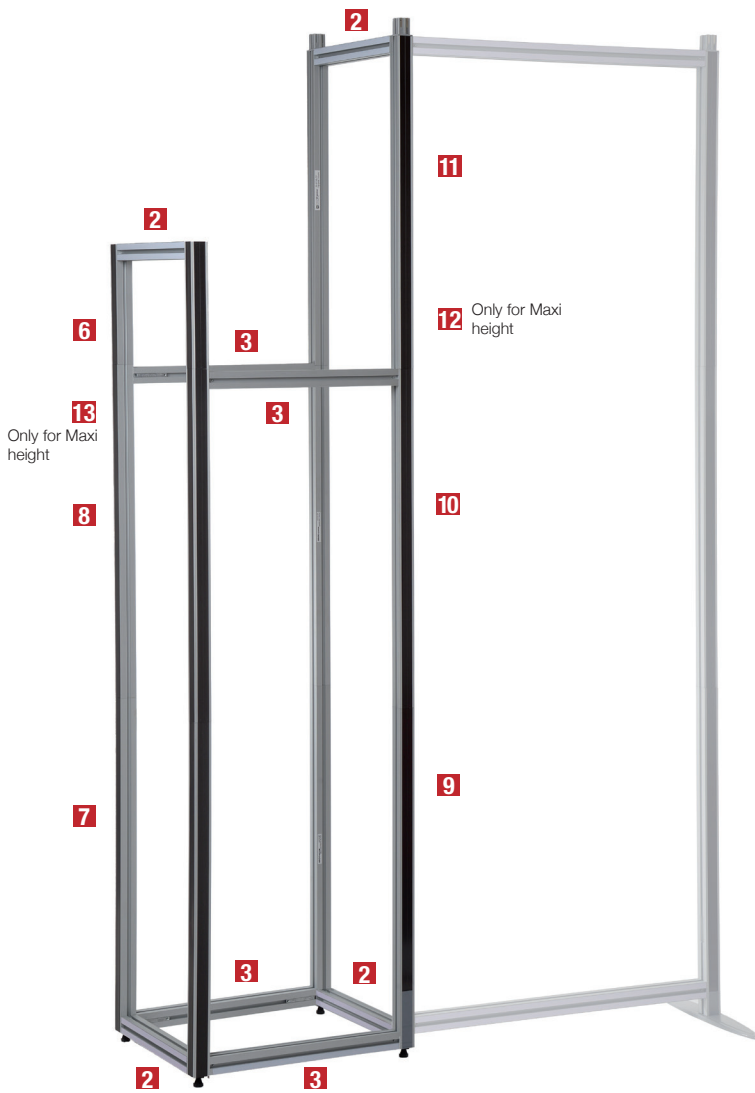
- IS-W750-EBM
- IS-0750-EEM
- IS-W750-BP
- IS-0750-EP
- IS-0755-TP
-
-

Maxi (2470 mm)

- IS-W750-EBM
- IS-0750-EEM
- IS-W750-BP
- IS-0750-EP
- IS-0755-TP
- IS-0200-EP
- IS-0200-EEM

Custom height:

Height difference between inner and outer post sections is 488 mm.
For heights exceeding 3000 mm two beams, item IS-400-BS, and two beams, item IS-453-BS, should be added for each additional 1000 mm.



2 Build the corner unit with the two plates and 2 beams.



3 Attach the corner unit on top of the module.



4 Lock it with the 4 FASTclamps

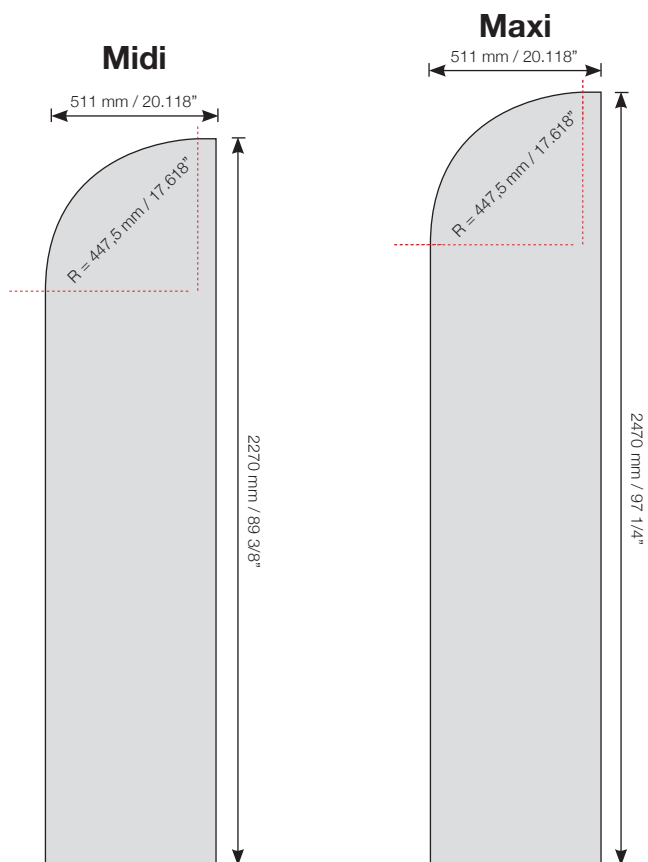


5 Attach the graphic panels

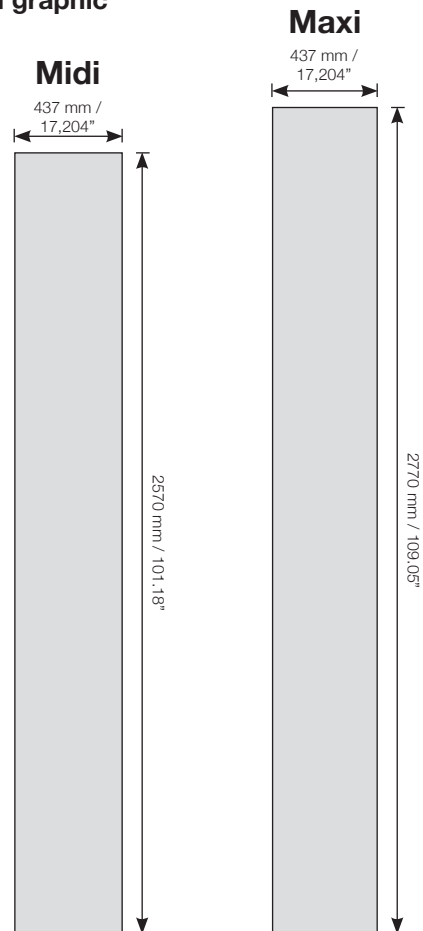
1 Mount the posts and beams.

Graphic panel production

Front graphic



End graphic



Graphic panel attachments

Accessories

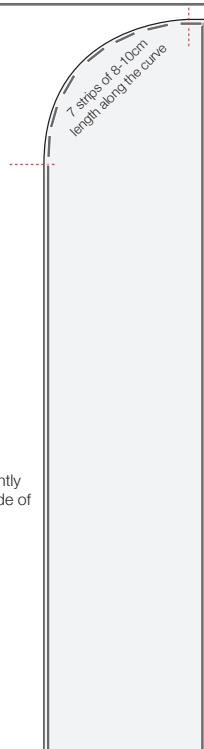
Kickers & Hangers

Shall not be used for this module.

Magnetic tape (not incl.)

12 mm/0.5", Item: 82281

Mount the magnetic tape slightly inset from the edge on this side of the graphic panel by approximately 9 mm / 0.35".



Mount the magnetic tape slightly inset from the edge on this side and bottom of the graphic panel by approximately 0,25 mm / 0.010".

Printer material

We recommend the following material:

Poster paper: 180 gr / 0.4 lb.

The printed graphic panels must be laminated before use.
Front side: 125 microns (0,125 mm) / 0.005" "deep crystal"
Reverse side: 250 microns (0,250 mm) / 0.010" "stop light"

Polyester film: 330-370 microns (0,350 mm) / 0.013-0.015"

Top laminate: 125 microns (0,125 mm) / 0.005" "deep crystal"

Mounting of Magnetic Tape

Magnetic tape to be fixed on the graphic panels. (See picture)